

www.gladman.co.uk



G25K

FOR SALE/TO LET 3-STOREY HEADQUARTERS OFFICE BUILDING
25,500 SQ FT (2,369.03 SQ M)



FOR SALE/TO LET
25,500 SQ FT (2,369.03 SQ M)

G25K

DESCRIPTION

The G25K is a high-specification, 3-storey office building designed to meet the needs of the modern business. Clear rectangular floor plates offer flexibility for open-plan use or easy sub-division. Each floor is ideally proportioned to maximise natural light from the full perimeter glazing.

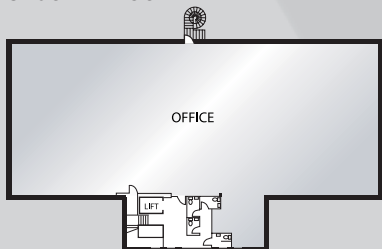
A fully glazed entrance foyer provides space for a generous reception area, plus stair and lift access to the upper floors. Toilet accommodation is provided at each level, including disabled facilities. The building has been designed to comply with the most recent Disability Discrimination Act (DDA) regulations.

The offices provide a practical and attractive working environment with the benefit of on-site car parking.

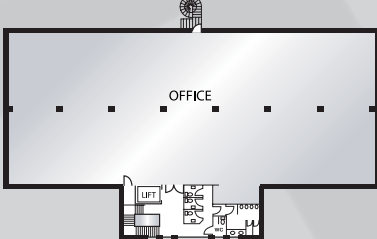


FLOORPLANS

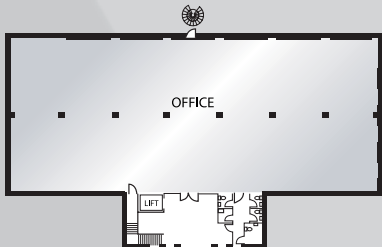
SECOND FLOOR



FIRST FLOOR



GROUND FLOOR



SPECIFICATION

- Suspended Ceiling
- LG7 Compliant Light Fittings
- Air Conditioning
- Full Access Raised Floors
- Lift
- Fire and Security Alarm
- Double Glazing
- DDA Compliant

FLOOR AREAS (Net Internal Areas)

FLOOR	SQ FT	SQ M
SECOND	8,660	804.54
FIRST	8,140	781.32
GROUND	8,430	783.17
TOTAL	25,500	2,369.03

FOR AVAILABILITY AND
 PRICING PLEASE CONTACT:

GLADMAN
 01260 288800
 www.gladman.co.uk

DISCLAIMER: Gladman on their own behalf and on behalf of proposing vendors or lessors give notice that: (i) these particulars are set for the general guidance of intended purchasers, lessees and/or any other person and do not constitute, nor constitute part of, an offer or contract nor are they guaranteed; (ii) all descriptions, dimensions, reference to condition and necessary permissions for use and occupation and other details are given in good faith but are approximate and are given without liability and any intended purchasers, lessees and/or any other person should not rely on them as statements or representations of fact but must satisfy themselves as to their accuracy; (iii) all interior and exterior unit photographs may be of other Gladman developments and are for illustrative purposes only; (iv) no partner and no person employed by Gladman agent/s has any authority to make any representation or give any warranty in relation to this property; (v) any prices or rents quoted in these particulars are exclusive of VAT; and (vi) nothing herein is intended to exclude or limit any liability that cannot be excluded or limited by any applicable law. Designed and produced by CW Advertising Limited. Tel: 01282 858200. October 2007.