

www.gladman.co.uk



G6K

FOR SALE/TO LET 2-STOREY HEADQUARTERS OFFICE BUILDING
6,100 SQ FT (566.71 SQ M)



FOR SALE/TO LET
6,100 SQ FT (566.71 SQ M)

G6K

DESCRIPTION

The G6K is a new 6,100 sq ft high-specification, 2-storey office building. Clear rectangular floor plates maximise flexibility and natural light to the offices.

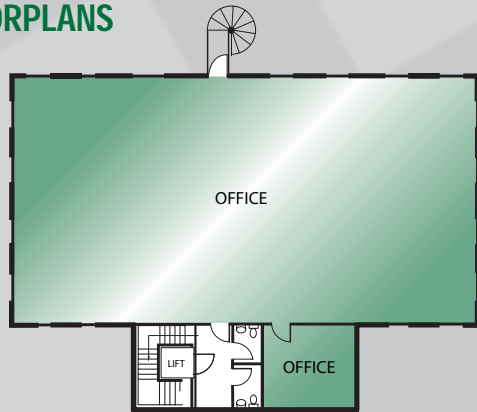
A generous entrance foyer provides access to the ground floor office and toilet areas, plus stair and lift access to the first floor. Toilets are provided on each floor, facilitating easy sub-division of the accommodation if required.

The specification and flexibility of the G6K makes it suitable for use as an open plan call centre or for sub-division into individual offices.

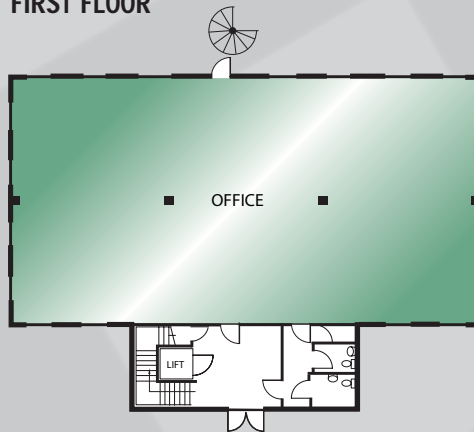
The offices provide a practical and attractive working environment with the benefit of on-site car parking.



FLOORPLANS



FIRST FLOOR



GROUND FLOOR

SPECIFICATION

- Suspended Ceiling
- LG7 Compliant Light Fittings
- Air Conditioning
- Full Access Raised Floors
- Lift
- Fire Alarm
- Double Glazing
- DDA Compliant



FLOOR AREAS (Net Internal Areas)

FLOOR	SQ FT	SQ M
FIRST	3,119	289.76
GROUND	2,981	276.95
TOTAL	6,100	566.71

DISCLAIMER: Gladman on their own behalf and on behalf of proposing vendors or lessors give notice that: (i) these particulars are set for the general guidance of intended purchasers, lessees and/or any other person and do not constitute, nor constitute part of, an offer or contract nor are they guaranteed; (ii) all descriptions, dimensions, reference to condition and necessary permissions for use and occupation and other details are given in good faith but are approximate and are given without liability and any intended purchasers, lessees and/or any other person should not rely on them as statements or representations of fact but must satisfy themselves as to their accuracy; (iii) all interior and exterior unit photographs may be of other Gladman developments and are for illustrative purposes only; (iv) no partner and no person employed by Gladman agent/s has any authority to make any representation or give any warranty in relation to this property; (v) any prices or rents quoted in these particulars are exclusive of VAT; and (vi) nothing herein is intended to exclude or limit any liability that cannot be excluded or limited by any applicable law. Designed and produced by CW Advertising Limited. Tel: 01282 858200. October 2007.

FOR AVAILABILITY AND
 PRICING PLEASE CONTACT:

GLADMAN
 01260 288800
 www.gladman.co.uk