

www.gladman.co.uk



G10K

FOR SALE/TO LET 3-STOREY HEADQUARTERS OFFICE BUILDING
10,070 SQ FT (935,53 SQ M)



FOR SALE/TO LET
10,070 SQ FT (935.53 SQ M)

G10K

DESCRIPTION

The G10K is a new 10,070 sq ft high-specification, 3-storey office building. Clear rectangular floor plates maximise flexibility and natural light to the offices.

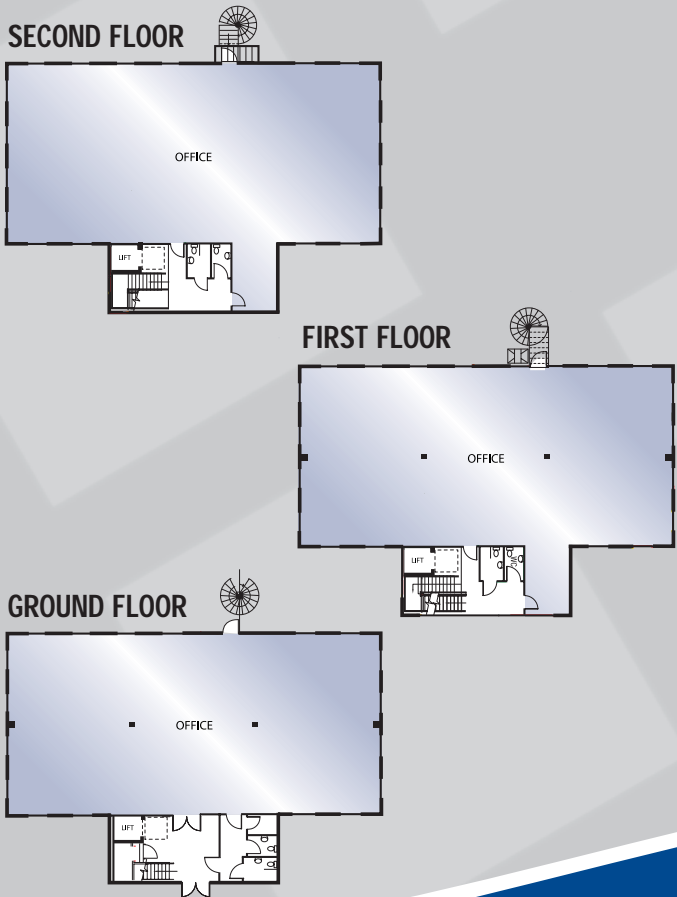
A generous entrance foyer provides access to the ground floor office and toilet areas, plus stair and lift access to the upper floors. Toilets are provided on each floor, facilitating easy sub-division of the accommodation if required.

The specification and flexibility of the G10K makes it suitable for use as an open plan call centre or for sub-division into individual offices.

The offices provide a practical and attractive working environment with the benefit of on-site car parking.



FLOORPLANS



SPECIFICATION

- Suspended Ceiling
- LG7 Compliant Light Fittings
- Air Conditioning
- Full Access Raised Floors
- Lift
- Fire Alarm
- Double Glazing
- DDA Compliant



FLOOR AREAS (Net Internal Areas)

FLOOR	SQ FT	SQ M
SECOND	3,400	315.87
FIRST	3,400	315.87
GROUND	3,270	303.79
TOTAL	10,070	935.53

FOR AVAILABILITY AND
 PRICING PLEASE CONTACT:

DISCLAIMER: Gladman on their own behalf and on behalf of proposing vendors or lessors give notice that: (i) these particulars are set for the general guidance of intended purchasers, lessees and/or any other person and do not constitute, nor constitute part of, an offer or contract nor are they guaranteed; (ii) all descriptions, dimensions, reference to condition and necessary permissions for use and occupation and other details are given in good faith but are approximate and are given without liability and any intended purchasers, lessees and/or any other person should not rely on them as statements or representations of fact but must satisfy themselves as to their accuracy; (iii) all interior and exterior unit photographs may be of other Gladman developments and are for illustrative purposes only; (iv) no partner and no person employed by Gladman agent/s has any authority to make any representation or give any warranty in relation to this property; (v) any prices or rents quoted in these particulars are exclusive of VAT; and (vi) nothing herein is intended to exclude or limit any liability that cannot be excluded or limited by any applicable law. Designed and produced by CW Advertising Limited. Tel: 01282 858200. October 2007.

GLADMAN
 01260 288800
 www.gladman.co.uk