



Stanley Green Business Park

HANDFORTH DEAN WILMSLOW CHESHIRE

TO LET: UNIT K4

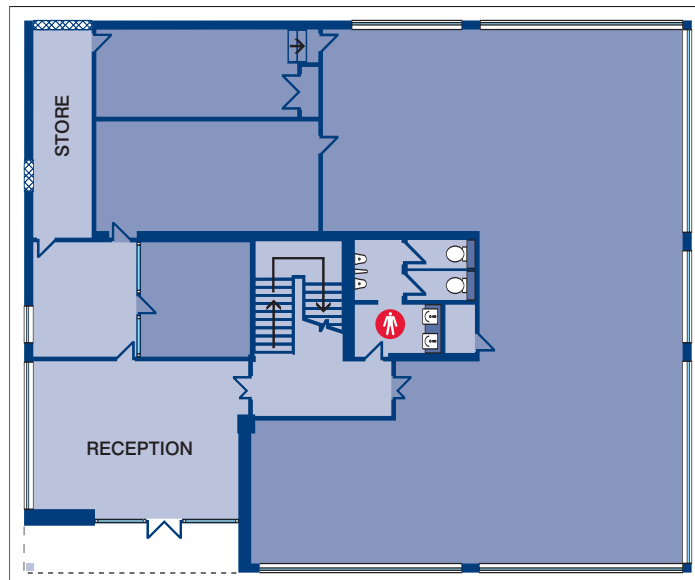
OFFICES

5,320 ft² (494 m²) (G.I.A)



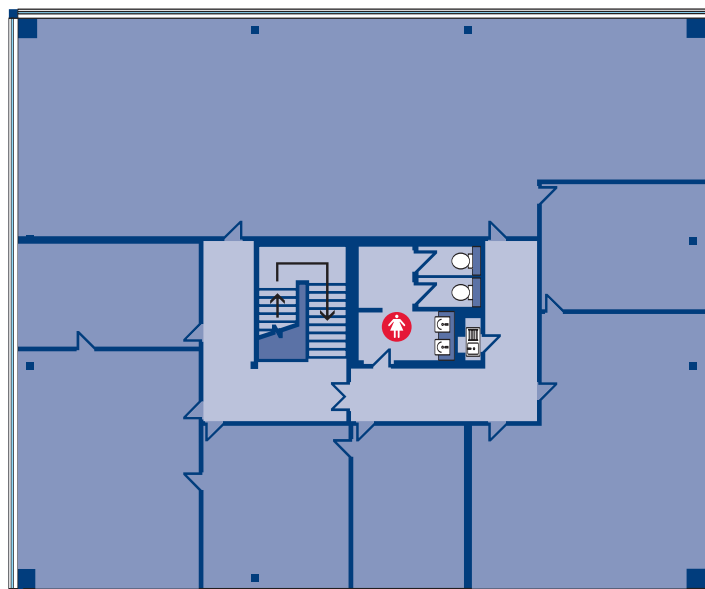
Ground Floor Offices

1,986 ft² (185 m²)
(N.I.A)



First Floor Offices

2,610 ft² (242 m²)
(N.I.A)





Stanley Green Business Park



LOCATION

Unit K4 is a refurbished, self-contained office unit located within Stanley Green Business Park.

Stanley Green Business Park occupies a strategic landmark site located 9 miles south of Manchester City Centre, 5 miles south west of Stockport, 2.5 miles east of Manchester Airport and 2 miles north of Wilmslow. The site is part of an established mixed-use development which has attracted a variety of Retail, Trade, Industrial and Office users.

ACCOMMODATION

The accommodation provides the following :

- Suspended ceilings, incorporating modular recessed lighting
- Modern open plan accommodation
- Fitted carpets throughout
- Fitted window blinds
- Central heating (perimeter radiators)
- Toilet and kitchen facilities
- Car parking



Orbit
Developments
A MEMBER OF THE EMERSON GROUP

FURTHER INFORMATION

For further information or to arrange a viewing please contact:

01625 588200
www.orbit-developments.co.uk

26 KING STREET MANCHESTER M2 6AY

Edwards & Co
0161 833 9991